



ONE PORT OF CALL RETAIL PRODUCT CATALOG

ph: (425) 827-2800 | e-mail: sales@cport.net | www.cport.net

Our Strengths

- 1. **Brand Power:** Our consistently branded packaging strengthens your supply chain by offering seafood from multiple producers and regions under a single brand.
- 2. **Online Access:** Our website provides in-depth information on seafood sourcing and sustainability along with species characteristics and cooking suggestions. You can also check prices, place your order and buy seafood online.
- 3. **Efficiency:** We have a nationwide distribution network so you can get what you need faster and easier.
- 4. **Expertise:** We have 40 years' experience importing seafood from all over the world.
- 5. **Get Ahead:** Our innovative Sea Port, Cnami, and Ola! brands offer products that represent the trends in the seafood industry.
- 6. **Industry Connections:** We are committed to the sustainability of seafood for today and future generations. In an effort to maintain the vitality of our blue planet, we work with industry colleagues who share this same commitment, including the National Fisheries Institute and the Global Seafood Alliance.
- 7. **Save Big:** Since we shop globally, we have the buying power to offer the best quality seafood at the best prices!
- 8. **Service:** We have unmatched customer service and 40 years of industry knowledge.
- 9. **Variety:** We carry more than 40 species from 15 countries.
- 10. **Certified Seafood:** We have access to certified seafood products, including Best Aquaculture Practices (BAP) for farmed and MSC for wild. We can give your customers what they are looking for.

Our Mission

Go Blue® is Sea Port's commitment to sustainability, health and social responsibility.

RESPONSIBILITY

Sea Port is committed to leading efforts to improve both wild and farmed seafood production methods. We work with suppliers who share this same commitment to social justice and the wise and ethical use of all resources.

HEALTH

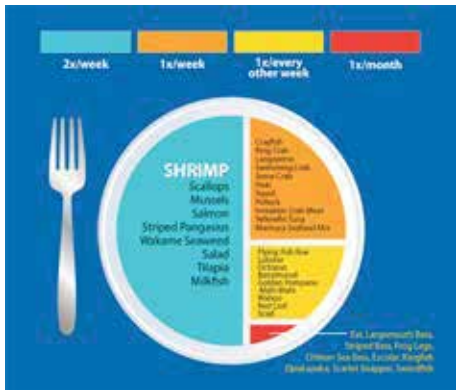
Sea Port understands the importance of seafood in our diets. With new research findings emerging almost every day, it has been proven that adding more seafood to a wholesome meal plan will provide healthy nutrition and protection against many chronic diseases associated with aging or dietary deficiency, such as heart disease, cardiovascular problems and diabetes, just to name a few. Seafood also provides high levels of omega 3 fatty acids which helps prevent inflammation.

PROSPERITY

The fishing industry is a cornerstone of the global economy. We believe that more transparent seafood markets globally will result in the greatest good for the greatest numbers and provide people around the world access to delicious, fresh seafood for generations to come.

SUSTAINABILITY

Sea Port is taking a stand for sustainable fishing by supporting efforts to improve the safety and accessibility of all seafood, wild and farmed. We believe that future global demand for fish will only be met through aquaculture--the responsible farming of ocean organisms like shrimp and salmon. Our initiatives will help to ensure that future generations can enjoy tomorrow's catch!



OUR BRANDS



At Sea Port, we're proud to offer more than just seafood. We provide products and name brands you can trust. We have strong ongoing relationships and a reputation that represents quality, versatility, consistency, and competitive pricing. All of our brands are professionally packaged and are both foodservice and retail-ready.

Our classic Sea Port brand, also referred to as "Catch Our Wave" and "Wave" brand, offers the widest selection under one brand. From shrimp to squid, mussels to mahi-mahi, Sea Port is truly your "one-stop-shop" for branded frozen seafood. If you like the ease of buying with just one call, Sea Port can help streamline your seafood purchasing. So why settle for anything less? Order Sea Port today and rest assured you're getting the very best.



Catch Our Wave®

www.cport.net



If you're looking for authentic Asian seafood, look no further than Cnami. Our products are made in Asia for use with Asian cuisine. We carry ready-to-eat items like Tobiko, Eel, and Seaweed Salad, and specialty items like our Izumi-Dai Quality Tilapia Fillet and Chuka Ika Sansai (seasoned squid salad). Because we're committed to building relationships with the entire distribution chain, you can be sure you're getting the freshest, most authentic seafood available. So come and explore the world of Cnami today!



Welcome to OLA!, the brand that means “wave” in Spanish. OLA! packaging features bilingual product information, making this line perfect for hispanic markets. We work with family-run businesses who share our commitment to fishing sustainably and bringing you the highest quality seafood available. When you choose OLA!, you can be confident you're getting delicious seafood that's good for you AND good for the planet. Bring home the wave today!

RETAIL PACKAGING

For your frozen seafood section



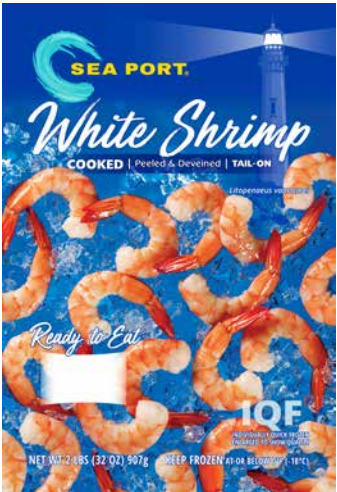
BLACK TIGER PRAWNS

Form	Origin	Brand	Pack	Size
Head-on • Shell-on	Philippines • Vietnam • Bangladesh	Sea Port	10/1 lb Block	6/8 - 26/30 ct/lb
P&D • Tail-on • Raw	Vietnam • Bangladesh • India	Sea Port	5/2 & 10/1 lb IQF	4/6 - 61/70 ct/lb
P&D • Tail-off • Raw	Vietnam • Bangladesh • India	Sea Port	5/2 & 10/1 lb IQF	16/20 - 51/60 ct/lb
P&D • Tail-on • Cooked	Vietnam • India	Sea Port	5/2 & 10/1 lb IQF	8/12 - 61/70 ct/lb
P&D • Tail-off • Cooked	Vietnam • India	Sea Port	5/2 & 10/1 lb IQF	8/12 - 71/90 ct/lb



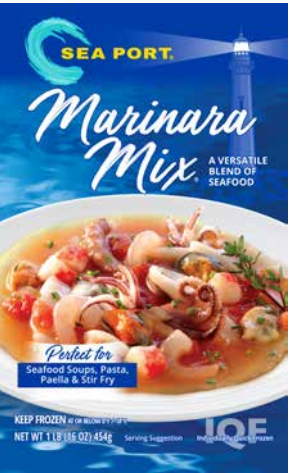
WHITE & FRESHWATER SHRIMP

Form	Origin	Brand	Pack	Size
EZ-Peel	India • Indonesia • Thailand	Sea Port • OLA	10/2, 10/1, 20/1 lb IQF	13/15 - 71/90 ct/lb
Cooked • EZ-Peel • Peel & Eat	Thailand	Sea Port	10/2 lb IQF	13/15 - 71/90 ct/lb
P&D • Tail-on • Raw	Thailand • Vietnam • India • Indonesia	Sea Port	5/2 & 10/1 lb IQF	13/15 - 91/120 ct/lb
P&D • Tail-off • Raw	Thailand • Vietnam • India • Indonesia	Sea Port	5/2 & 10/1 lb IQF	16/20 - 91/120 ct/lb
P&D • Tail-on • Cooked	Thailand • Vietnam • India • Indonesia	Sea Port	5/2 & 10/1 lb IQF	16/20 - 91/120 ct/lb
P&D • Tail-off • Cooked	Thailand • Vietnam	Sea Port	5/2 & 10/1 lb IQF	21/25 - 200/300 ct/lb
Freshwater Shrimp Head-on • Shell-on	Thailand • Vietnam	Sea Port	12/2 lb SEMI IQF	1/2 - 8/12 ct/lb



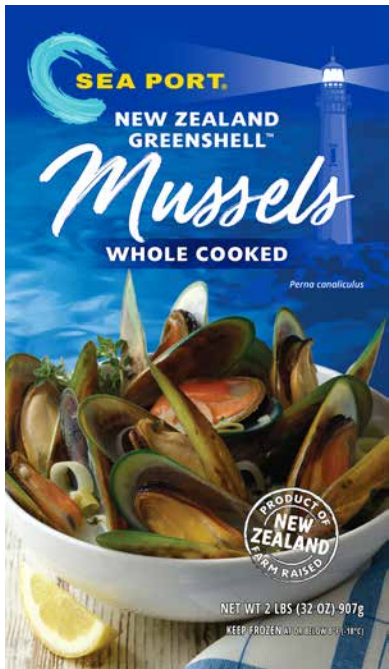
SHELLFISH

Form	Origin	Brand	Pack	Size
Crawfish Cooked • Tail Meat	China	Boudreaux	16/12 oz, 24/1 lb IQF	80/100, 100/150, 150/200, 200/up ct/lb
Langostino Lobster • Cooked	Chile	Sea Port	4/5 & 5/2 lb IQF	60/100, 70/120 & 100/200 ct/lb
Seafood Mix	Thailand • China	Sea Port • Clippers Catch • Jintown	20/1 lb IQF	*See below



MOLLUSK

Form	Origin	Brand	Pack	Size
Greenshell Mussel • Whole	New Zealand	Sea Port • Flavoursome	12/1 lb Vacuum Pack	Medium & Large
Greenshell Mussel • Half-shell	New Zealand	Sea Port • Talley's • Gourmet	12/2 lb IQF	Small, Medium & Large
Chilean Blue Mussel • Whole	Chile	Sea Port	5/2 lb Vacuum Pack	Normal & Jumbo
Chilean Blue Mussel • Half-shell	Chile	Sea Port	10/2 lb IQF Polybag	Medium
White Hard Clam • Whole Cooked	Vietnam	Sea Port	10/2, 20/1 lb VP	17/22, 22/28 ct/lb



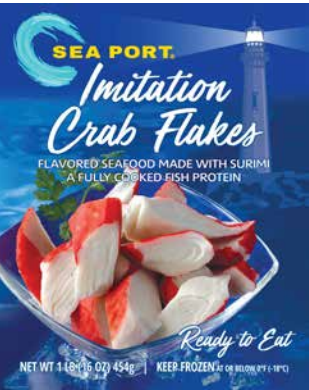
CEPHALOPOD

Form	Origin	Brand	Pack	Size
Loligo Squid • Tube & Tentacle	China • Thailand	Sea Port • Fresh Catch • Leader • Jintown • KF	20/2.5 lb, 12/2.5 LB Block	3/5 & 5/8 inch
Calamari Steak	Taiwan	Sea Port	6/5 lb IQF	4/5 & 5/6 oz/piece



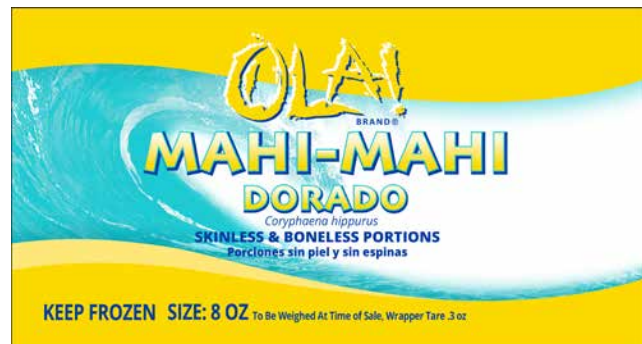
ASIAN SPECIALTY

Form	Origin	Brand	Pack	Size
Cooked Eel Fillet • Unagi	Taiwan • China	Cnami	1/22 lb IVP	8, 9, 10, 11 oz/piece
Imitation Crab	China	Sea Port • Fish for You • Viseafood	12/2.5 & 30/1 lb VP	Flake, Stick, Stick Minced Style
Seasoned Flying Fish Roe • Tobiko	Taiwan	Cnami	12/1.1 lb Tub	Orange, Green, Black & Red
Seasoned Seaweed Salad • Wakame	Taiwan	Cnami	6/4.4 LB Tub & 12/1 lb Tub	n/a
Seasoned Squid Salad • Chuka Ika Sansai	Taiwan	Cnami	6/4.4 lb Tub	n/a



FISH

Form	Origin	Brand	Pack	Size
Mahi Mahi Portion • Skinless • Boneless	Taiwan	OLA	1/10 lb IVP	2, 4, 6, 8, 10 oz
Tilapia Fillet • Skinless • Boneless	China • Taiwan	Cnami	1/10 lb IVP & IQF Bulk 1/22 lb Styro	2/3 thru 11/up oz



FULL PRODUCT LIST

For your seafood counter



FULL PRODUCT LIST

SHRIMP

PRODUCT	FORM	ORIGIN	BRAND	PACK	SIZE
Black Tiger Prawns	Head-on • Shell-on	Philippines • Vietnam • Bangladesh	Sea Port	10/1 lb Block	6/8 - 26/30 ct/lb
	Headless • Shell-on	Vietnam	Sea Port	6/4 lb Block	4/6 - 71/90 ct/lb
	Headless • Shell-on	Philippines	AA-1 • Seabreeze • Bohol	6/4 lb Block	4/6 - 71/90 ct/lb
	Headless • Shell-on	Indonesia	Sea Port • PT Lola • Leader	6/4 lb Block	4/6 - 71/90 ct/lb
	Headless • Shell-on	Bangladesh • India	Sea Port • Packer	6/4 lb Block	8/12 - 31/40 ct/lb
	Headless • Shell-on	Myanmar	Neptune	6/1.8 kg Block	6/8 - 8/12 ct/lb
	EZ-Peel	Vietnam • Bangladesh	Sea Port	10/2 lb IQF	13/15 - 41/50 ct/lb
	P&D • Tail-on • Raw	Vietnam • Bangladesh • India	Sea Port	5/2 & 10/1 lb IQF	4/6 - 61/70 ct/lb
	P&D • Tail-off • Raw	Vietnam • Bangladesh • India	Sea Port	5/2 & 10/1 lb IQF	16/20 - 51/60 ct/lb
	P&D • Tail-on • Cooked	Vietnam • India	Sea Port	5/2 & 10/1 lb IQF	8/12 - 61/70 ct/lb
	P&D • Tail-off • Cooked	Vietnam • India	Sea Port	5/2 & 10/1 lb IQF	8/12 - 71/90 ct/lb
White Shrimp	Head-on • Shell-on	Ecuador • Peru	White Pearl • Packer	10/4 lb Block	30/40 - 80/100 ct/lb
	Cooked • Head-on	Thailand	Sea Port	4/5 lb IQF	26/30 ct/lb
	Headless • Shell-on	Thailand • Vietnam • India • Indonesia	Sea Port • Packer	6/4 lb Block	16/20 - 91/110 ct/lb
	Headless • Shell-on	Mexico	Barlovento	10/4 lb Block	16/20 - 26/30 ct/lb
	Headless • Shell-on	Ecuador • Peru	Packer	10/4 lb Block	16/20 - 51/60 ct/lb
	Headless • Shell-on • Wild	Mexico	Barlovento	10/5 lb Block	U/8 - 13/15 ct/lb
	EZ-Peel	India • Indonesia • Thailand	Sea Port • OLA	10/2, 10/1, 20/1 lb IQF	13/15 - 71/90 ct/lb
	Cooked • EZ-Peel • Peel & Eat	Thailand	Sea Port	10/2 lb IQF	13/15 - 71/90 ct/lb
	P&D • Tail-on • Raw	Thailand • Vietnam • India • Indonesia	Sea Port	5/2 & 10/1 lb IQF	13/15 - 91/120 ct/lb
	P&D • Tail-off • Raw	Thailand • Vietnam • India • Indonesia	Sea Port	5/2 & 10/1 lb IQF	16/20 - 91/120 ct/lb
	P&D • Tail-on • Cooked	Thailand • Vietnam • India • Indonesia	Sea Port	5/2 & 10/1 lb IQF	16/20 - 91/120 ct/lb
	P&D • Tail-off • Cooked	Thailand • Vietnam	Sea Port	5/2 & 10/1 lb IQF	21/25 - 200/300 ct/lb
Freshwater Shrimp	Head-on • Shell-on	Thailand • Vietnam	Sea Port	12/2 lb SEMI IQF	1/2 - 8/12 ct/lb
	EZ-Peel	Bangladesh	Sea Port	10/2 lb IQF	4/6 - 21/25 ct/lb
	EZ-Peel • Grill Cuts	Bangladesh	Sea Port	10/2 lb IQF	4/6 - 21/25 ct/lb
Wild Argentine Red Shrimp	Headless • Shell-on	Argentina	Icy Ocean	10/2 lb IQF	8/12 - 26/30 ct/lb
	EZ-Peel	Argentina	Icy Ocean	10/2 lb IQF	8/12 - 26/30 ct/lb
	P&D • Tail-on • Raw	Argentina	Icy Ocean	5/2 lb IQF	13/15 - 31/40 ct/lb
	P&D • Tail-off • Raw	Argentina	Icy Ocean	5/2 lb IQF	13/15 - 31/40 ct/lb
Wild Oregon Pink Shrimp	Cooked & Peeled	USA	Bornstein • Hallmark	4/5 lb IQF	250/350 ct/lb
Wild Canadian Shrimp	Cooked & Peeled	Canada	Polar • Clearwater	4/5 lb IQF	90/125 - 250/350 ct/lb
Wild PUD Shrimp	P&D • Cooked • Peeled • Undeined	India	Penta Gold	4/5 lb IQF	250/350 & 300/500 ct/lb

CRAB/LOBSTER

PRODUCT	FORM	ORIGIN	BRAND	PACK	SIZE
Dungeness Crab	Sections	USA	Packer	1/25 lb IQF	Ocean Run
Red King Crab	Leg & Claw	USA • Norway • Russia	Packer	1/20 lb IQF	4/8 - 20/up ct
Gold King Crab	Leg & Claw	USA • Russia	Packer	1/20 lb	6/9 - 20/up ct
Patagonian King Crab	Clusters	Chile	Packer	1/20 lb	300/700 g
Cold Water Atlantic Lobster	Tail	Canada	Packer	1/10 lb	3/4 oz - 16/20 oz
Lobster	Whole • Cooked	Canada	Packer	1/10 lb	16/20 oz - 20/24 oz
	Cooked • Claw & Knuckle Meat	Canada	Packer	6/2 lb	n/a
	Cooked • Claw, Knuckle & Leg Meat	Canada	Packer	6/2 lb	n/a
	Cooked • Broken Meat	Canada	Packer	6/2 lb	n/a
Warm Water (Spiny) Lobster	Tail	Bahamas • Brazil • Honduras • Belize • Colombia	Golfstream	4/10 lb IQF	5 oz - 24 oz
Snow Crab	Clusters	Canada • Norway • Russia • Greenland	Packer	1/30 & 1/20 lb IQF	4/8, 5/8, 8/10 & 10/12 oz/piece
	Cocktail Claw	Korea	Fish For You	12/2 lb IQF	21/30 & 31/40 ct/lb
	Combo	Korea	Sea Port	6/5 lb Block	70% Body/ 30% Leg & All Leg
	Combo	Canada • China	Packer	6/5 lb	70% Body/ 30% Leg
	Combo • Deep-water	China • Russia	Packer	6/5 lb	70% Body/ 30% Leg
Rock Crab	Combo	Canada	Acadian • Luxury	6/5 lb Block	80% Body / 20% Leg
	Salad Meat	Canada	Acadian • Luxury	6/5 lb Block	n/a
Lump Crab	Combo	China	Leader	24/1 lb Tub	70% Jumbo/ 30% Lump
Crawfish	Whole • Cooked	China • Egypt	Boudreaux	2/5 & 4/5 lb IQF	10/15 & 16/22 ct/lb
	Cooked • Tail Meat	China	Boudreaux	16/12 oz, 24/1 lb IQF	80/100, 100/150, 150/200, 200/up ct/lb
Brown/Pink Slipper	Tails	Thailand • Taiwan • China • Vietnam	Moonlake • Clipper's Catch • Hochico • Hsien Pin	2/5 & 6/5 lb IQF	U/1, 1/2, 2/4 & 4/6 oz/piece
Pink Slipper	Meat	Thailand • Taiwan • China • Vietnam	Packer	6/5 lb IQF	Broken, U/5, U/1, 1/2, 1/3 & 2/4 oz/piece
Langostino Lobster	Cooked	Chile	Sea Port	4/5 & 5/2 lb IQF	60/100, 70/120 & 100/200 ct/lb
Jonah Crab	Cooked Claw & Arm Triple Scored	Canada • USA	Kildare	4/5 lb IQF	5/7 & 7/10 ct
	Combo	Canada	Kildare • Luxury	6/5 lb Block	80% Salad Meat/20% Leg
Seafood Mix		Thailand • China	Sea Port • Clippers Catch • Jintown	20/1 lb IQF	*See Image

FISH

PRODUCT	FORM	ORIGIN	BRAND	PACK	SIZE
Barramundi	Fillet • Skinless • Boneless	Taiwan • China • Vietnam	Sea Port	1/10 lb IVP, CO, IWP	6, 8, 10, 12/14 oz
	Whole	Taiwan • China • Vietnam	Sea Port	1/40 lb	800/up g
Bass (Large Mouth)	Whole Round	Taiwan	Sea Port	1/40 lb IWP	400/600, 500/800 g
Bass (Striped)	Whole Round	Taiwan	Sea Port	1/40 lb IWP	400/600, 500/600 & 600/800 g
Butterfish	Whole	Ecuador	Pacfish SA	1/22 lb IQF	100/150, 150/200, 200/300, 300/up g
Chilean Sea Bass	Portions • Skinless • Boneless	Chile	Sea Port	1/10 lb IWP	6/8, 8/10, 10/12 oz
	Fillet • Skin-on	Chile	Packer	lbs	4/6-20/25 lb
Channel Catfish	Whole	Chile	Packer	1/40 lb	25/up lb
	Fillet	China	Packer	1/15 lb Bulk	3/5 thru 9/11 oz
Cod (Atlantic)	Fillet	Greenland • Iceland	Packer	2/15, 3/14 lb Shatter Pack	16/32 oz
Cod (Pacific)	Fillet • Skinless • Boneless	China	Sea Port	1/10 lb IQF	16/32 oz
	Loins	China	Sea Port	1/10 lb IQF	16/32 oz
Cod (Red)	Fillet • Skinless • Pin Bone	New Zealand	Talley's	1/10 kg Shatter Pack	2/4, 4/6, 6/8 & 8/12 oz
Dover Sole	Whole	Holland	Seataste	800/up g, 1/25 lb IQF, IWP	16/20, 20/24, 24/28 oz/piece
Emperor	Fillet	Indonesia	Indo Fiesta	1/10 lb	6/8 oz - 1/3 lb
Escolar	Steak	Taiwan	Sea Port	1/20 lb IVP	6/up oz
Grouper	Cleaned • Scaled	Indonesia	Ocean Bright	1/22 lb IWP	.5/1, 1/2 & 2/3 lb
	Fillet • Skinless • Boneless	Indonesia	Ocean Bright • Prima Star	4/10 lb IWP	4/6 thru 1/3 lb
Hamachi	Fillet • Skin-on with collar	Japan	Crane Bay	~30#/case IVP	2-2.5 kg & 2.5+ kg
Hoki	Fillet • Skinless • Boneless	New Zealand	Talley's • Amaltal	3/15 lb, 1/10 kg Shatter Pack	4/6, 6/8, 6/UP, 8/12, 8/up oz
	Portions	New Zealand	Talley's	4/2.5 kg	4/5 oz + 5/6
Kingfish	Whole • Head-on • Gutted	China • India	Sea Port	1/60 lb IWP	5/10, 10/15, 15/25 & 25/up lb
	Steak	India • Taiwan • Indonesia	Sea Port • Prima Star • Hochico	1/10 lb IVP	4/6, 6/8, 8/10, 10/12 & 12/14 oz
Mahi Mahi	Fillet • Skin-on	Taiwan	Sea Port	1/50 lb IWP	1/2, 2/3, 3/4, 4/5, 5/6, & 6/UP lb
	Loin	Taiwan	Sea Port	1/50 lb IWP	1/3 lb
	Portion • Skinless • Boneless	Taiwan	OLA	1/10 lb IVP	4, 6, 8, 10 oz
Milkfish	Whole Round	Taiwan	Sea Port	1/40 lb IWP	300/500, 600/800, & 800/UP g
	Baby • Whole Round	Taiwan	Sea Port	20/2 lb IQF Bulk	100/300 g
Opakapaka	Cleaned • Scaled	Indonesia	Ocean Bright	1/22 lb IWP	.5/1, 1/3, 1/2 & 2/3 lb
	Fillet • Skin-on	Indonesia	Ocean Bright • Prima Star	4/10 lb IWP	4/6 thru 24/28 oz
	One-cut Fillet	Indonesia	Ocean Bright	4/10 lb IWP	6/8 thru 24/28 oz
	Fillet • Skinless • Boneless	New Zealand	Tally's • Amaltal	1/10 kg Shatter Pack	4/6, 6/8, 8/12, 8/up, 12/up oz
Ornate Emperor	Fillet • Skin-on	Thailand	Kingfisher	4/10 lb IWP	6/8 oz
Pollock	Fillet • Skinless • Boneless	China	Sea Port	4/10 lb IQF	1/2, 2/4, 4/6, 6/8, & 8/10 oz
Pompano	Whole Round	China	Sea Port	1/40 lb IWP	400/600, 500/600, 600/800 g
Porgy (Nz Tai)	Whole Round	New Zealand	Talley's	1/10 kg IQF	11 - 25 ct/kg
Red Drum	Whole	Taiwan	Sea Port	1/40 lb IQF	600/800, 800/1200 g
Salmon (Atlantic)	Portions • Skinless • Boneless	Chile	Sea Port	1/10 lb IVP	4, 6 & 8 oz
	Fillet • Skin-on	Chile	Sea Port	1/22 lb IVP	2/3 lb/pc, Trim D & 3/4
	Poke Cube	Chile	Packer	14/1 lb IVP	Sashimi Grade
Salmon (Pink)	Skinless • Boneless	China	Sea Port	1/10 lb IVP	4 - 8 oz
Salmon Chum (Keta)	Fillet • Skin-on	China	Sea Port	1/25 lb IVP	1/3 lb/pc, Trim C
	Portions • Skinless • Boneless	China	Sea Port	1/10 lb IVP	6 & 8 oz
Scad	Cleaned • Scaled	Philippines	Sea Port	1/22 lb IQF Bulk	40, 50, 60, 70 ct/case
	Whole	Philippines • Taiwan	Sea Port	1/22 lb IQF Bulk	30 to 100 ct/case
Snapper	Cleaned • Scaled	Thailand • Indonesia	Kingfisher • Smiling Fish • Prima Star	1/22 lb IWP	.5/1, 1/2 & 2/3 lb
	Fillet • Skin-on • Collar-on	Thailand • Indonesia	Kingfisher • Smiling Fish • Prima Star	4/10, 1/10 & 1/20 lb IWP	2/4 - 24/28 oz, 1 - 3 lb
Striped Pangasius	Skinless • Boneless	Vietnam	Sea Port • Panga	1/15 lb IVP & Bulk	3/5 thru 9/up oz
Swordfish	Loin • Sashimi • A-Grade	Singapore	Packer	Approx 30#/Case IWP	4/8, 5/20, 8/20, 10/20 lb
	Steaks	Chile • Indonesia	Sea Port	1/10 lb IVP	6, 8, 10 oz
Tilapia	Gutted • Scaled	China • Taiwan	Sea Port	1/40 lb IWP	350/550, 550/750 & 750/up g
	Whole Round	China • Taiwan	Sea Port	1/40 lb IWP	400/600, 600/800, & 800/up g
	Fillet • Skinless • Boneless	China • Taiwan	Cnami	1/10 lb IVP & IQF Bulk 1/22 lb Styro	2/3 thru 11/up oz
Tilapia (Red)	Whole	China	Sea Port	1/40 lb IWP	600/800 g
Toothfish	H & G	New Zealand	Talley's • New Zealand Longline	Catch WT	4/8, 5.5/10, 8/12, 10/15, 15/20 & 20/30 kg
Tuna (Albacore)	Loin	Singapore	Packer	1/60 lb IWP	5/8 lb
Tuna (Yellowfin)	Loin	Vietnam • Indonesia	Packer	1/44 lb & 1/30 lb IVP	4/8 & 8/12 lb (Indo), 7/12 (Vietnam)
	Saku	Vietnam • Indonesia	Packer	1/10 lb & 2/11 lb IVP	A1, AA1, A2 & AA2 BLOCK
	Steak	Vietnam • Indonesia	Packer	1/10 lb & 1/20 lb IVP	4, 6, 8, & 10 oz
	Poke Cube	Indonesia	Packer	2/11 lb IVP	AA Grade & A1 Grade
	Maki Meat	Indonesia	Packer	2/11 lb IVP	n/a
Wahoo	Fillet • Skin-on	Taiwan	Sea Port	1/50 lb IWP	5/up lb
	Portions	China • Taiwan	Sea Port	1/10 lb IWP	6 & 8 oz
	Loin	Taiwan	Sea Port	1/50 lb IWP	2 lbs/up

FULL PRODUCT LIST

AMPHIBIAN

PRODUCT	FORM	ORIGIN	BRAND	PACK	SIZE
Frog Legs	Saddle Off	China • Vietnam	Sea Port	6/5 lb IQF, IWP	2/4, 4/6, 6/8, 8/12, 13/15 & 16/20 pairs/lb

MOLLUSK

PRODUCT	FORM	ORIGIN	BRAND	PACK	SIZE
Sea Scallop	Processed	Canada • USA • Japan • Peru	Seiho • Eastern • Seatrade • Millennium	6/5, 2/5 lb IQF	U/10, 10/20, 20/30, & 30/40 ct/lb
Bay Scallop		China • Philippines	Sea Port	6/5 lb IQF	40/60 thru 200/300 ct/lb
Dry Sea Scallop		USA & Japan	Elite • Eastern • Hokkaido	6/5 lb IQF	U/10, 10/20 & 20/30 ct/lb
Greenshell Mussel	Whole	New Zealand	Sea Port • Flavoursome	12/1 lb Vacuum Pack	Medium & Large
	Half-shell	New Zealand	Sea Port • Talley's • Gourmet	12/2 lb IQF	Small, Medium & Large
	Meat	New Zealand	OPC • Talley's	12/1 kg IQF	Small, Medium & Large
Chilean Blue Mussel	Whole	Chile	Sea Port	5/2 lb Vacuum Pack	Normal & Jumbo
	Half-shell	Chile	Sea Port	10/2 lb IQF Polybag	Medium
	Meat	Chile • China	Sea Port • Packer	2/5 lb IQF	Small & Medium
White Hard Clam	Whole Cooked	Vietnam	Sea Port	10/2, 20/1 lb VP	17/22, 22/28 ct/lb

CEPHALOPOD

PRODUCT	FORM	ORIGIN	BRAND	PACK	SIZE
Octopus	Whole	Indonesia • Philippines	Sea Port • Prima Star • Indo Fiesta • Smiling Fish	1/30 lb IQF & IWP Pinwheel & Ball	1/2, 2/4, 4/6, 6/8, & 8/up lbs
	Baby	Thailand • India • Vietnam	Sea Port	12/2 lb Block	5/15, 16/25 & 26/40 ct/kg
Spanish Octopus	Whole Raw	Spain	Fribo	lbs Tray & Flower	2/4, 4/6, 6/8, 8/12 lb/pc
	Cooked • Tentacle	Spain	Fribo	lbs Tray	n/a
Loligo Squid	Tube & Tentacle	China • Thailand	Sea Port • Fresh Catch • Leader • Jintown • KF	20/2.5 lb, 12/2.5 LB Block	3/5 & 5/8 inch
	Tube Only	China	Fresh Catch • Leader • Jintown • Ocean Best	20/2.5 lb Block	3/5 & 5/8 inch
	Tentacle Only	China • Thailand	Kingfisher • Fresh Catch • Leader • Jintown	8/3 lb IQF	Tentacles
	Rings & Tentacle	China • Thailand • Vietnam	Sea Port • Kingfisher • IOR • Leader • Fresh Catch	8/3 lb IQF (80% Rings / 20% Tentacles)	2 cm cut from 3/5" tube (reg. & lg.)
	Rings	China • Thailand • Vietnam	Sea Port • Kingfisher • IOR • Leader • Fresh Catch • Jintown	8/3 lb IQF	5/8" tube (lg.)
	Whole	California, USA	Angel Gate	12/3 lb Block	Ocean Run
Illex Squid	Tube	China • Taiwan	Sea Port	1/22 lb IQF	U/5, U/10 ct/kg
	Whole Round	Taiwan	Sea Port	1/35 lb IQF	400/up & 500/up g
Squid	Pineapple Cut	Taiwan	Sea Port	8/3 lb	Roll Shape
Arrow Squid	Whole	New Zealand	Amaltal	2/15, 1/10 kg	400/600 & 600/up g
	Headed & Guttled	New Zealand	Talley's	1/10 kg Block	U/200 g, 200/up g
Calamari	Steak	Taiwan	Sea Port	6/5 lb IQF	4/5 & 5/6 oz/piece
Cuttlefish	Whole • Cleaned	India	Packer	1/22 lb IQF	U/1, 1/2 ct/kg

ASIAN SPECIALTY

PRODUCT	FORM	ORIGIN	BRAND	PACK	SIZE
Cooked Eel Fillet	Unagi	Taiwan • China	Cnami	1/22 lb IVP	8, 9, 10, 11 oz/piece
Imitation Crab		China	Sea Port • Fish for You • Viseafood	12/2.5 & 30/1 lb VP	Flake, Stick, Stick Minced Style
Seasoned Capelin Fish Roe	Masago	Taiwan	Cnami	12/1.1 lb Tub	Orange, Green & Red
Seasoned Herring/Flying Fish/Capelin Roe	Masago	Taiwan	Cnami	12/1.1 lb Tub	Orange, Green & Red
Sushiko	Masago	Taiwan	Cnami	12/1.1 lb Tub	Orange
Seasoned Flying Fish Roe	Tobiko	Taiwan	Cnami	12/1.1 lb Tub	Golden, Orange, Green, Black & Red
Seasoned Seaweed Salad	Wakame	Taiwan	Cnami	6/4.4 LB Tub & 12/1 lb Tub	n/a
Seasoned Squid Salad	Teriyaki Ika	Taiwan	Cnami	6/4.4 lb Tub	n/a
Seasoned Squid Salad	Chuka Ika Sansai	Taiwan	Cnami	6/4.4 lb Tub	n/a
Cooked Octopus	Yanagidako	Japan	Daiichi • Marutsubo	1/22 lb IQF	3, 4, 5, 6, 7, 8, 9, 10 ct/cs

PLACE YOUR ORDER WITH US

Kirkland, WA 98033

Phone
(425) 827-2800
email
sales@cport.net

Find detailed product
information and point-of-sale
brochures on our website:

www.cport.net

Perth Amboy, NJ 08861

Phone
(732) 826-9400
email
sales@cport.net

WEST COAST
OFFICE

131 7th Avenue, West, Kirkland, WA 98033

Ph: (425) 827-2800

e-mail: sales@cport.net

EAST COAST
OFFICE

536 Fayette Street, Perth Amboy, NJ 08861

Ph: (732) 826-9400

e-mail: sales@cport.net

PRODUCTS STORED AT THE FOLLOWING LOCATIONS:

WEST COAST
LINEAGE LOGISTICS

3200 East Washington Blvd

Vernon, CA

Ph: (323) 261-4500

email: b5orders@lineagelogistics.com

EAST COAST:
LINEAGE LOGISTICS

536 Fayette Street

Perth Amboy, NJ

Ph: (732) 826-9400

email: w1orders@lineagelogistics.com

